



P A R E S A

# ISLAND EXPERIENCE

by Paresa Resort Phuket



# PHUKET MAP

---

## THAILAND



# Island Excursions



## Luxury Long Tail Boat

Private luxury long-tail boat trip to visit the beautiful off-shore islands around Phuket. There are six different packages to choose from, all private and in our traditional 'stylish' local long-tail boat. With a professional service and a plethora of on-board amenities, this is a day out to remember.

[MORE DETAILS >](#)



## Speedboat & Sport Cruiser Series

Speedboats are versatile and quick that allows you to travel to all locations near Phuket in a matter of time. It is the perfect vessel for your group or just the two of you to cover more areas within a shorter time.

[MORE DETAILS >](#)

# Island Excursions



## Catamaran

Enjoy an unforgettable experience on a private catamaran, that can accommodate up to 15 passengers and sail through the glistening Andaman Sea to your preferred southern islands.

[MORE DETAILS >](#)



## Yacht

Discover Phuket islands - Avoid the crowded boat tours! Stay away from the most touristic areas and enjoy the best spots and quality time with your family and friends on your private trip. Flexible with time and destinations. You can take an extraordinary yacht trip to the many nearby tropical paradises, including the famous Phi Phi Islands, or enjoy a serene cruise around the mystical Phang Nga Bay- the famous James Bond Island. Swimming among fish at Mai ton island, Racha Island or Coral Island reveals hidden gems for travelers searching for a more exciting experience.

[MORE DETAILS | YACHT >](#)

[MORE DETAILS | LUXURY YACHT >](#)

# Island Excursions



## Phi Phi Island

Experience your slice of paradise on this full - day island hopping trip that will introduce you to the wonders of the Phi Phi Islands by Catamaran or speedboat, which will transport you to the glittering azure waters and white, pristine beaches of Maya Bay - the tropical location featured in 'The Beach' film. Here you'll explore the mysterious Viking Cave- a famous point for snorkeling in crystal clear turquoise water with incredible corals and colorful fishes and sightseeing at emerald Pileh Lagoon surrounded by towering limestone cliffs and caves. The roaming monkeys of Monkey Island will then entertain you - but beware of these cheeky animals as they often snatch unguarded belongings! All these locations are home to tropical reefs where you'll be mesmerized by the vibrant marine life as you snorkel through crystal clear waters.

[MORE DETAILS >](#)



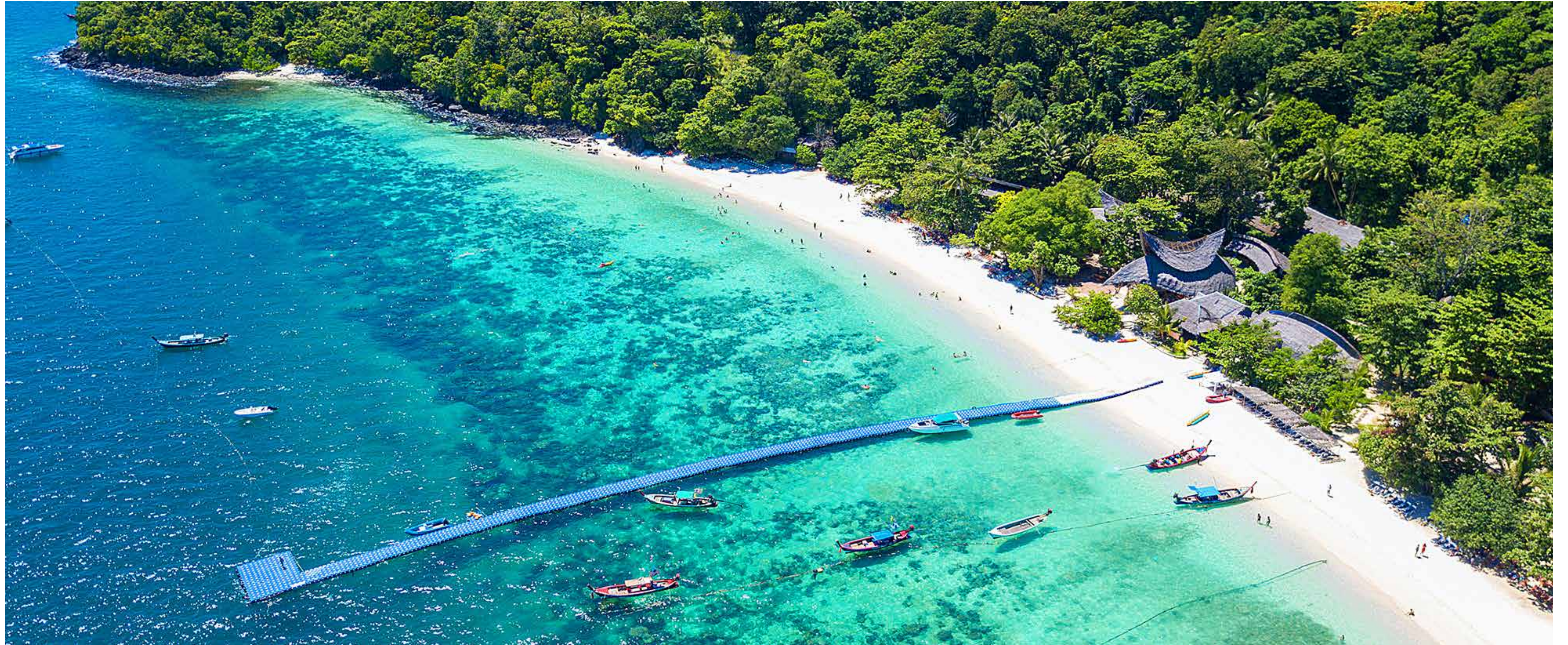
## James Bond Island & Phang Nga Bay

Visit James Bond Island without the crowds and go discover an ancient world of limestones, hidden caves, hong, mangrove forests and abundant nature.

We leave early to give you a more relaxing and quiet tour, avoiding the busy periods and to be the first to arrive at James Bond Island. Enjoy a private canoeing trip and a private lunch at Koh Panyee with no crowds and no rush.

[MORE DETAILS >](#)

# Island Excursions



## Banana Beach (Koh Hey)

Join an exciting island experience to one of Phuket's most stunning beaches, Koh Hey, often known as Coral Island. You will be able to see and experience the island's white sandy beaches and turquoise waters. Spend your day relaxing and possibly participating in exciting activities such as snorkeling and sunbathing. If you combine this trip with an optional stop at Mai Ton on the way back try your luck spotting some dolphins.

[MORE DETAILS >](#)

# Shore Excursions



## Elephant Sanctuary Park

In the Elephant sanctuary you can experience elephants in the most natural way. In their natural environment, where they are free and simply wonderful! It is important to us that you can experience the daily life of the animals, and that you can approach them when feeding or bathing.

[MORE DETAILS >](#)



## Chalong Temple

Wat Chalong, or Chalong Temple (officially Wat Chai Thararam), is the largest, most revered, and most visited Buddhist temple in Phuket. According to some sources, it was built at the beginning of the 19th century, 1837. Chalong Temple is one of the Must-See places in Phuket, and the nearby Big Buddha of Phuket, as they are relatively close.

# Shore Excursions



## Big Buddha

The Phuket Big Buddha is a 45-meter-tall white marble statue visible from anywhere in the southern part of Phuket. This impressive landmark is probably at the top of everyone's "Must-Do" in Phuket, and it is a jaw-dropping sight. The panoramic views from up there are breathtaking.



## Promthep Cape

Promthep Cape is a rocky headland that sticks out into the Andaman Sea and is the most southern point of Phuket Island. Facing west, this is the best spot in south Phuket to watch the sunset or enjoy the ocean's views during the day. There's lots of parking and a big open space on top of the hill with a shrine and a lighthouse. You can walk down a dirt path to the end of the cape or enjoy the views from the road.

# Shore Excursions



## Three Beaches viewpoint

The most famous observation point of the 3 Beaches, Kata Not, Kata and Karon, is located on the road halfway between Nai Harn Beach and Kata Noi Beach. From this spot, an intriguing view of the three beaches and Ko Pu constantly impresses visitors.

# Shore Excursions - Phuket Town

## Phuket Town – A Walking Guide to Old Phuket Town

Old Phuket Town is the historical district of Phuket which is small and exciting enough to explore. You will see a lot of Sino-Portuguese style shophouses on each side of the streets, small and colorful shops, some excellent local Thai restaurants, and lately, many young coffee shops. Walking around town will also be a chance for you to visit both Thai temples and colorful Chinese shrines, significant landmarks, as well as a couple of Museums and some beautiful old mansions



### Phuket Old Town


Lively Phuket Old Town is known for brightly painted, century-old Sino-Portuguese townhouses, with a well-preserved row along Soi Rommanee. Main street Thalang Road has stores selling artisanal ice cream and batik fabrics and a Sunday market for souvenirs and street food like fried banana. The Thai Hua Museum features exhibits on Chinese immigrant culture, and Jui Tui Shrine displays colorful statues of Chinese gods.

[WALKING TOUR MAP >](#)



### Baan Chinpracha

Baan Chinpracha is a typical Sino-colonial mansion built in 1903, during the Phuket tin mining boom that saw the establishment of the Chinese tin barons in Phuket Town. Baan Chinpracha is located off Krabi Road, near the western end of Phuket Old Town – the historical district that was entirely built during this time of economic growth in Phuket.

 Daily, from 9:00 - 16:30 hrs.

 Krabi Road, Phuket Town

# Shore Excursions - Phuket Town



## Thai Hua Museum

Thai Hua Museum is set in a splendid, well-preserved Sino-colonial mansion located on Krabi Road in Phuket Old Town. Originally used as a Chinese-language school, it went through an extensive renovation in 2008 and reopened as a museum the same year. Nowadays, it also hosts art exhibitions and is used as a function hall during the annual Phuket Old Town Festival as well as other special events.

- 🕒 Daily, 9:00 - 17:00 hrs.
- 📍 Krabi Road, Phuket Town



## Soi Romanees

Just off the famous Thalang road is Soi Romanees (P), with all the colourful buildings that make it the most photographed street in Phuket. However, the most beautiful part of Phuket Town was the red light street and the gambling area. You can now stay at one of the small guest-houses or have a drink at a cafe while watching the permanent Instagram competition going on here.

- 📍 Thalang Road, Phuket Town

# Shore Excursions - Phuket Town



## Jui Tui Shrine

Though it is particularly popular during the Vegetarian Festival, this respected shrine is also frequented by locals celebrating their birthdays and other special occasions. Festival time sees this shrine packed with devotees, procession-goers and an audience for the Chinese opera that's performed onsite.

- 🕒 Daily, 8:00 - 20:30 hrs.
- 📍 Soi Phutorn, Phuket Town



## Wat Mongkhon Nimit

Wat Mongkol Nimit is one of the most beautiful temples in Phuket, Thailand that is famous for the golden statue of Buddha and the colonial buildings. Every year thousands of tourists visit it to take picture of this beautifully built and colourful temple that is home for many monks who live and study there. You will also enjoy walking and mediating in the relaxing gardens of the temple.

- 🕒 Daily, 8:00 - 17:00 hrs.
- 📍 Dibuk Road, Phuket Town

# Shore Excursions - Phuket Town



## Phuket Cafe Hopping

While Phuket is more famous for its sandy beaches and nightlife than for its café culture, the island does have some fine cafes and coffee houses where hipsters and foodies can enjoy an afternoon of cakes, pastries, desserts, coffee, and tea.



## Street Art - Phuket Old Town

One of Phuket's oldest neighbourhoods is also its edgiest. Walk on repaved sidewalks while admiring cool and colourful street art and graffiti, and restored multi-hued Sino Portuguese shophouses.

[VIEW THE STREET ART MAP >](#)

# Shore Excursions - Phuket Town



## Lock Tien Food Court

Lock Tien is a well known Thai Chinese, kind of indoor street food, restaurant in Phuket town serving a mixture of Hokkien and local adapted dishes. One of their signature dishes is Mee Leung Pad Hokkien Sai Kai - yellow egg noodles fried Hokkien style with an egg on the side. It is pretty good. It's a nice low-key kind of restaurant to eat and sample a number of dishes when you're in Phuket town, and definitely worth checking out for either a meal or even a snack.

- 🕒 Daily, 10:00 - 17:00 hrs.
- 📍 Dibuk road, Phuket Town



## Punte Food Court

Punte Phuket is a new and beautiful food court serving local street food, hidden in the old streets of Phuket town, tucked in a dead-end street off Yaowarat Road. The place is charming and spacious, with a beautiful old Phuket design and serves a large choice of local Thai food, including some Phuket specialities. The prices are reasonable but higher than in local shops but the food is good, making Punte a convenient spot to take a break during your exploration of Old Phuket Town.

- 🕒 Daily, 6:00 - 18:00 hrs.
- 📍 Soi Soon Uthit, Phuket Town

# Adventure Activities



## ATV Tour

ATV offers a different and unique experience. Enjoy a fun and safe ride through untamed, untouched rainforests, get in touch with local villages, farms, plantations, and dark mangrove forests, and discover a hidden waterfall and an unspoiled beach. ATV bikes are fully automatic, safe, and easy to operate. There is no prior riding experience needed to join our one-of-a-kind tour. After safety briefings and operations orientations, beginners and experienced riders will be practicing on an easy track to get a feel for the ATV bikes. Once used to the bikes, everyone will be ready to hit the trails, supervised by professional staff and guides.

[MORE DETAILS >](#)



## Zipline

Try the exciting experience of Phuket zipline: Flying Hanuman is an eco-adventure because it is part of the forest that surrounds it and provides 28 platforms, two sky bridges, spiral staircases, and one sky rail. You will be fitted with the latest Petzl® technical gear and taught how to use all your equipment to ensure that you have a safe adventure in the treetops. The Zipline Eco-Adventure is perfect for people of all ages

[MORE DETAILS >](#)

# Shows



## Phuket Fantasea

Phuket FantaSea is the world's first entertainment park that presents Thai Culture and Tradition as its central theme. All the attractions in the Park, be it the show, the restaurant, the shopping street, and all other areas, are inspired by Thai mythology, legends, and folklore. The name "FantaSea" is a combination of the word "Fantasy" and "Sea" to mean "a Sea of Fantasy." The result is a stunning 140-acre themed complex packed with a multitude of activities and entertainments: a carnival village with games, handicrafts, and shopping, a 4,000-seat themed restaurant offering a grand buffet of Thai and international cuisines, a breathtaking Las Vegas-style theatrical show, displaying Thailand's myths, mysteries, grace and beauty.

🕒 Every Tuesday, Friday and Sunday 17:30 - 22:30 hrs.

📍 Kamala

[MORE DETAILS >](#)



## Carnival Magic

Carnival Magic is the crowning jewel in nighttime entertainment on the resort island of Phuket. Spanning over 40 acres and awash with dazzling colors and sparkling imagery, Carnival Magic comes to light as the very first Thai Cultural Carnival Park, celebrating the vibrancy and rich cultural heritage found in the many traditional festivals, carnivals and market fairs that abound throughout the Kingdom.

🕒 Every Monday, Wednesday and Saturday 17:30 - 22:30 hrs.

📍 Kamala

[MORE DETAILS >](#)

# Shows



## Junkyard Theatre

The Junkyard Theatre is a creative entertainment venue located in Phuket, Thailand. Inspired by the island's dramatic cultural landscape the theatre exists as a juxtaposition of east and west, an arena where cultures clash together in the most absurd ways possible.

We've put together a show that features an eclectic collection of quirky musical numbers, decadently crafted sets, and dinner cabaret style acts.

- 🕒 Every Saturday, 19:00 - 22:30 hrs.
- 📍 Chalmprakiat road for 9 roads bypass

[MORE DETAILS >](#)

# Water Parks



## Andamanda Phuket Water Park

“Andamanda” the largest leisure and entertainment destination in Phuket. Andamanda celebrates the natural treasures of Thailand and the inspired tales of adventure from the Andaman Coastline. The refreshingly authentic Thai design is reflected in all areas, including retail, restaurant, cafes, and event spaces. Andamanda is a unique destination offering the senses and spirit an unforgettable experience of joy and relaxation, to visitors of all ages, throughout the inspiring journey of their visit.

🕒 Daily, 10:00 - 19:00 hrs.

📍 Kathu

[MORE DETAILS >](#)



## Blue Tree

Blue Tree Phuket Water Park is an immense playground designed for adults and kids to spend a day of fun in the warm waters of a tropical island. With its colorful and brightly decorated buildings, the park is easy to spot on the roadside of Cherngtalay, on the way to Bangtao beach. This 17,000-square meters lagoon is gigantic, with an impressive restaurant building and a vast array of water activities, water slides, zip lines, and paddleboards.

🕒 Daily, 10:00 - 19:00 hrs.

📍 Cherngtalay, Thalang

[MORE DETAILS >](#)

# Phuket Golf

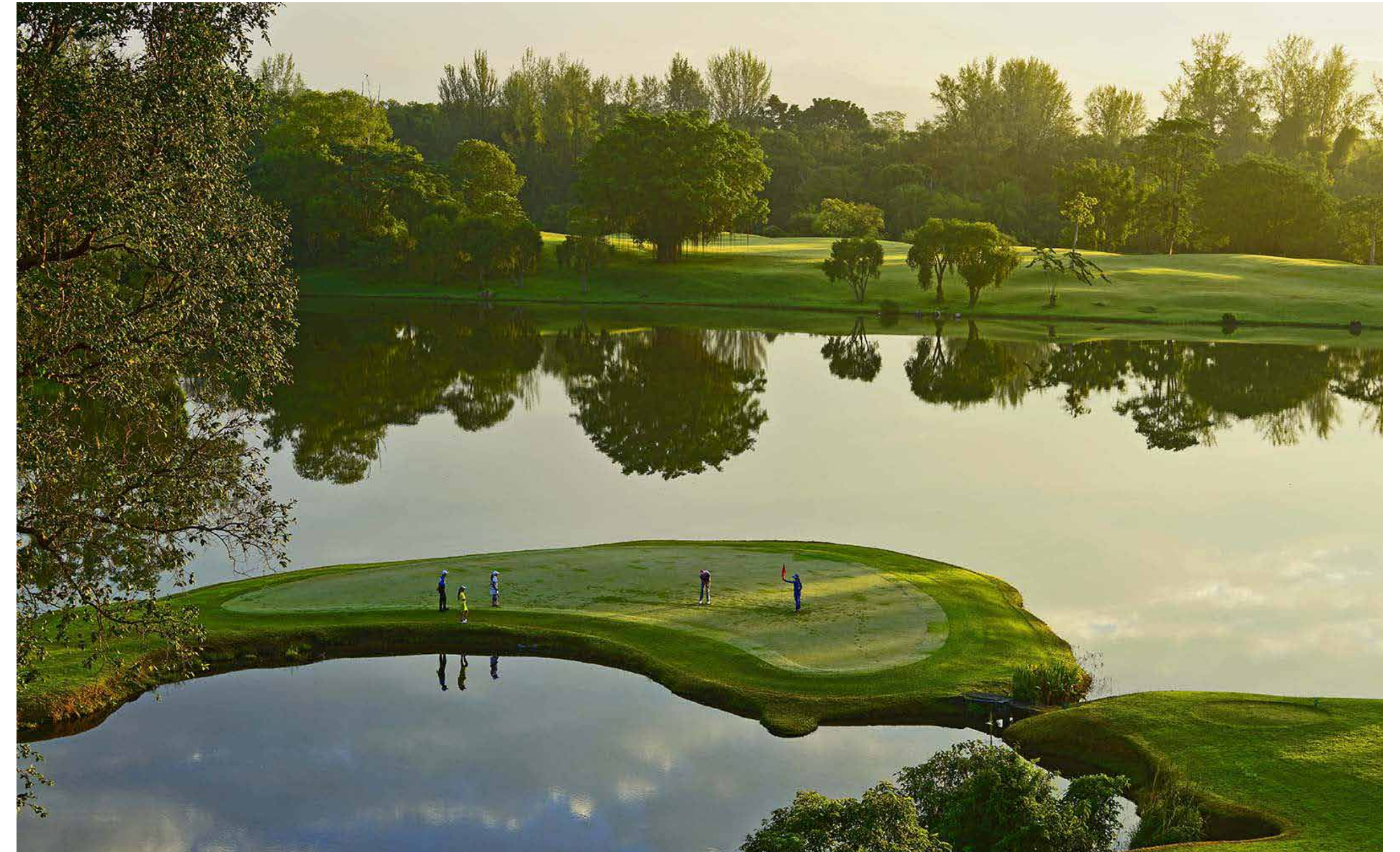


## Laguna Golf Phuket

Laguna Golf Phuket is part of Asia's first fully integrated destination resort, set within the world-renowned Laguna Phuket. With easy accessibility by complimentary shuttle services between the surrounding hotels in Laguna Phuket, the redesigned golf course has been revitalized to reach world-class standards. A surrounding scenic environment, comprising lush green mountains, white sandy beaches, and environmental lagoons, makes Laguna Golf Phuket a truly idyllic golf paradise. The Club's members from all around the world have created over the decades a warm and friendly club ambiance, always welcoming new members and players.

🕒 Daily, 6:00 - 19:00 hrs.

📍 Cherngtalay, Thalang



## Blue Canyon Phuket

Blue Canyon Country Club has been rated as one of the most prestigious golf clubs in Asia, with two stunning, award-winning championship courses on its 700+ acres of succulent valley seamlessly winding its way through rubber plantations and tin mines. The rigorous Canyon Course remains renowned for hosting the Johnnie Walker Classics Tournament twice and offers a challenging and thorough game. At the same time, the visually stunning Lakes Course promises magnificent views of the dramatic natural vistas while enjoying a more relaxing round. Driving ranges, practice putting greens, and lessons from professional golfers are available at both courses, with a Pro Shop carrying top gear and apparel brands within the club facilities. The common clubhouse offers a full range of world-class amenities, including sauna, Jacuzzi, massages, and restaurant restaurants.

🕒 Daily, 6:15 - 17:00 hrs.

📍 At the north end of Phuket, near the Phuket Airport

# Phuket Golf



## Red Mountain

Red Mountain is more than just great golf. A stunning garden of tropical trees, flowers, and shrubs exhibits the most beautiful and vibrant flora of the area attracting Phuket's colorful species of butterflies and birds. Ornithological trails introduce bird watchers to some of the region's most spectacular and distinctive birds. Man's legacy at the Tin Mine was a unique landscape for the magic of nature's renewal and rejuvenation and a magnificent raw canvas for our course. Rare and beautiful forms of plants and wildlife, exotic ferns, wild orchids, Indian rhododendrons, and nepenthes, have flourished in the old mine landscape. Golfers will enjoy one of Phuket's stunning virgin forests, where ancient trees reach for the clouds and weird and wonderful wildlife create a cacophony of tropical jungle sounds. Known locally as the most challenging course in Phuket and often voted amongst Thailand's finest, the course is sculpted into the rugged rocky terrain left over from the old tin mine days. It is both a scenic delight and a truly unique challenge.

🕒 Daily, 6:00 - 18:00 hrs.

📍 Kathu

# Kids Friendly Activities



## Aquaria Phuket

Aquaria is the best aquarium in Phuket and the biggest in Thailand. Located in the heart of the city, beneath Central Phuket Floresta. A magical underwater journey at Phuket's best aquarium that takes you through the wonders of the ocean and the mysteries of the rivers. Be entertained and inspired by over 25,000 animals and interact with our knowledgeable and friendly staff to learn more about the ocean's wonders. Amaze your eyes and brain at Phuket aquarium, Central Phuket Floresta.

🕒 Daily, 10:00 - 18:00 hrs.

📍 B1 Floor, Central Phuket Floresta



## Trick Eye Museum Phuket

World renowned 3D Museum now in Phuket! Trick Eye Museum brings you closer to art through the use of optical illusions. Immerse yourself in different settings at 5 themed zones and recreate into memorable photographs with your imagination. Trick Eye Museum, the optical illusion 3D art museum, is the hottest attraction in Phuket. Trick Eye Museum is the world's first AR (augmented reality) museum, which applies augmented reality technology on its exhibits to produce vibrant and exciting photos and videos. Visitors can meet a fire-breathing sea dragon while standing over a log bridge, swim with whale sharks while trapped in a large tank, and even meet polar bears while sitting on ice cliffs.

🕒 Daily, 10:00 - 18:00 hrs.

📍 B1 Floor, Central Phuket Floresta

# Kids Friendly Activities



## Phuket Adventure Mini Golf

Phuket Adventure Golf is a mix between mini golf and long golf, played on artificial grass with a putter and a ball. Our spectacular and exciting 18 holes of mini golf take about an hour to play. The course is suitable for those who have never held a golf club, but also challenging enough for those who play full size courses.

🕒 Daily, 11:00 - 22:00 hrs.

📍 Cherngtalay, Talang



## The Upside Down House Museum

The Upside Down House Museum and Attractions is one of Phuket's most unique and popular tourist attractions. It's a great place to get creative and snap some mind-boggling images and videos. With plenty of crazy things to do, this wacky museum will surely provide hours of amusement for visitors of all ages. Don't forget the Street Art display with 3D effects. And while you are it, why not discover the Maze, Escape Room Game, or indulge in a 9D virtual reality cinema experience! Enjoy a single attraction or take advantage of our value combo ticket deals! So, if you're looking for something fun and exciting to do while in Phuket Town, be sure to visit the Upside Down House Museum and Attractions Phuket.

🕒 Daily, 10:00 - 18:00 hrs.

📍 Chalermprakit road for 9 roads bypass

# Shopping Mall



## Central Phuket Shopping Centre

Phuket's largest shopping destination comprises of two modernly designed buildings (Festival and Floresta) 40 minutes from the hotel. 'Central' features luxury brands, a TOP's supermarket, hundreds of lifestyle shops & F&B outlets as well as three main attractions of a cinema, aquarium and an adventure theme park. This is Phuket's largest and most modern department shopping store.

- 🕒 Daily, 10:0 - 22:00 hrs.
- 📍 Vichitsongkram road, Phuket Town



## Central Patong Shopping Centre

Central Patong offers an expansive merchandise selection, a variety of outlets, and dining experience for all lifestyles in a modern and welcoming ambience. This department store features several types of products from fashion, beauty, healthcare, electronic appliances, gadgets, stationary to home entertainment products and systems. There are also a number of restaurants and cafes, that serve different styles of food, suitable for all tastes.

- 🕒 Daily, 10:30 - 22:30 hrs.
- 📍 Patong Beach, Kathu

# Shopping Mall



## Jungceylon Shopping Centre

Jungceylon Shopping Centre is the major mall in downtown Patong and only 15 minutes from the hotel. The mall's 2 main stores are Robinson Ocean Jungceylon – a gleaming, well-lit, up-per-end department store – and Big C Extra Jungceylon supermarket.

The 200-plus other stores present brand-name clothing items, sunglasses, cosmetics and perfumes, shoes, DVDs, computer games, tons of mobile phones and accessories as well as electrical goods. Additionally there's also great entertainment hotspot with an SF Cinema and a SF Strike 16-lane bowling alley, perfect for rainy days or to escape the heat of Patong Beach.

- 🕒 Daily, 11:00 - 22:00 hrs.
- 📍 Patong Beach, Kathu



## Robinson Lifestyle Thalang

Robinson Lifestyle Thalang is a new landmark located near the Phuket heroines' monument roundabout. This all-in-one shopping mall is a modern destination for everyone to come for a variety of purposes whether eating, shopping or playing. There are a large array of popular restaurants, various shops & stores with brand-name products, entertaining zones for kids, a foodpark for local food seekers and also cinemas for movie lovers.

- 🕒 Daily, 10:00 - 21:00 hrs.
- 📍 Close to Thao Thep Krasattri and Thao Si Sunthon Monument

# Shopping Mall



## Porto De Phuket

Situated in Cherngtalay district, near Boat Avenue and Laguna Phuket, Porto de Phuket is a part of the Central Group, one of Thailand's top department store retailers. This open-air lifestyle & shopping destination has a finest living experience theme, that combines design, lifestyle and nature. It consists of 7 features including a Phuketian Mercado that serves tempting food from morning to evening menu, a Central Food Hall, Restaurant and Cafe Zone, a Multi Design House, a Healthy Heaven Area, a Kid's Learning Centre and a Pet Friendly Zone.

- 🕒 Daily, 10:00 - 21:00 hrs.
- 📍 Cherngtalay, Talang

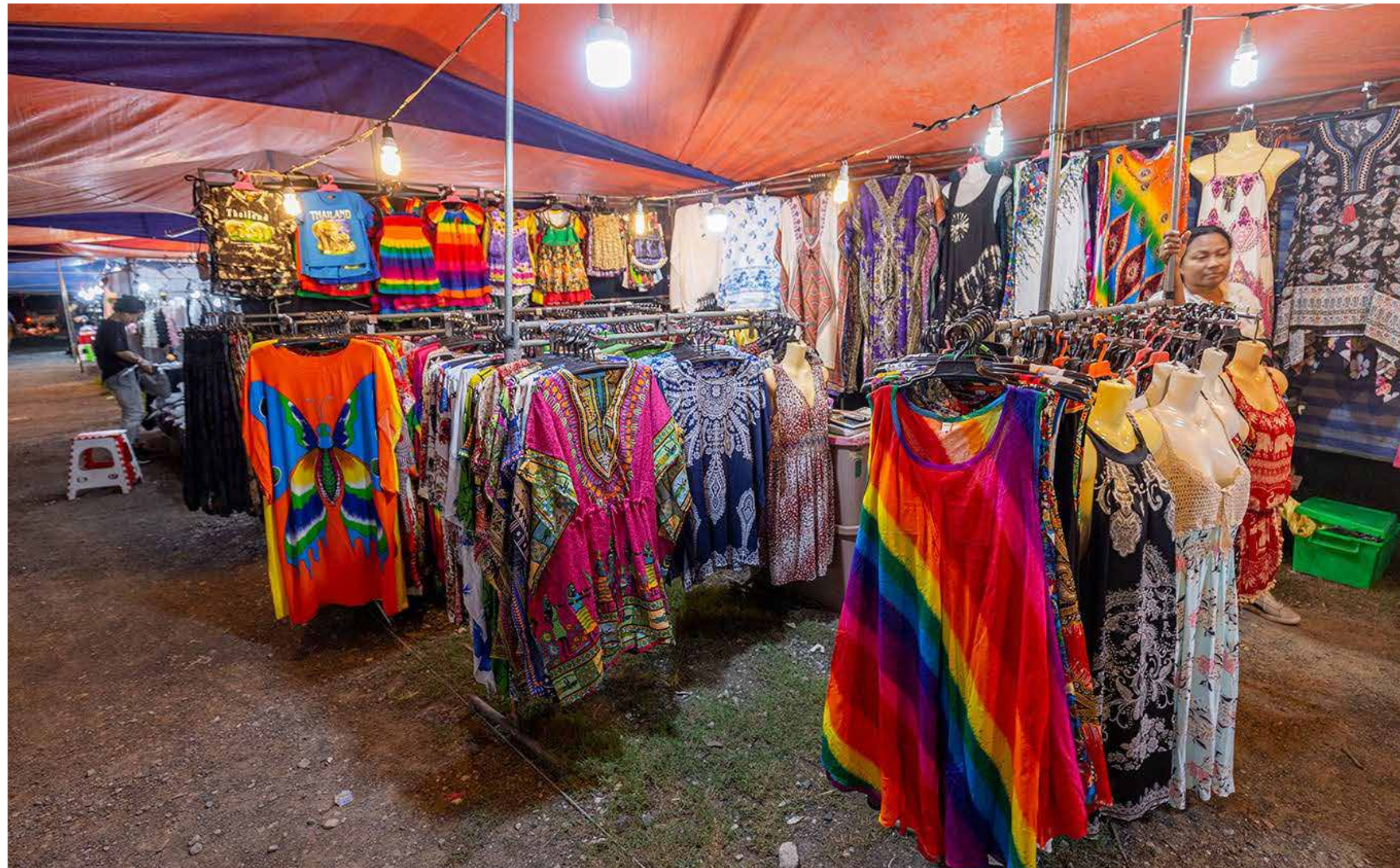


## Boat Avenue

Boat Avenue at Cherngtalay district is Thailand's first container mall with a surrounding retail and lifestyle area. Avenue is a popular spot for local and international families and visitors. The lively area draws visitors from Bangtao, Surin, Layan and Kamala beach areas and is also home to a regular Friday night market. With an international supermarket and wide range of eateries, boutiques and personal care centres, Boat Avenue has something for everyone.

- 🕒 Daily, 10:00 - 21:00 hrs.
- 📍 Cherngtalay, Talang

# Phuket Night Market



## Kamala Night Market

Kamala Friday Night Market has gained a lot in popularity since its creation and its size seems to expand week after week. The goods sold here are the usual suspects: clothing, fashion accessories (bags, hats, scarves), electronic or mechanical gadgets and toys, and so on. The most interesting side of the market is its food section, which offers an incredible choice of delicious local products and ready-made snacks, from tropical fruits to pancakes to satay to sushi.

- 🕒 Monday and Friday, 16:00 – 20:00 hrs.
- 📍 Opposite Phuket Fantasea



## Fun Friday Avenue Market

Fun Friday Avenue Market is a small weekend market popping up every Friday evening at Boat Avenue on the way to Phuket Laguna. It's modest in size but fun to visit if you stay in the Bangtao Beach area. Night markets are part of Thailand life, and wherever there is a market, there is a crowd and lots of food!

- 🕒 Friday, 16:00 - 22:00 hrs.
- 📍 Boat Avenue, Cherngtalay, Talang

# Phuket Night Market



## Chillva Night Market

Chillva Market Phuket is one of the markets that has opened in recent years and is probably one of the best on the island, it's a bit more upmarket and trendy than what you expect from a night market, then even have their own themed branding. What you can find here is of course good food, and regular night market goods like clothes, jewelry, shoes and various trendy gadgets.

🕒 Wednesday – Saturday, 17:00 - 22:00 hrs.

📍 Ratsada, Phuket Town



## Sunday Night Market

Phuket Sunday Walking Street Market is called 'Lard Yai Market' by locals and is the most popular attraction in Phuket Town. This 360-metre long street market was an instant success, adding a much-needed event to the historical part of town.

🕒 Sunday, 16:00 - 21:00 hrs.

📍 Thalang Road, Phuket Town

# Phuket Night Market



## Naka Night Market

Phuket Weekend Market, or Naka Market or even 'Chaofa Variety Weekend Market', is an immense night bazaar located near Central Festival in Phuket Town. Occasionally it's even called 'Phuket Chatuchak' by reference to the giant Chatuchak Weekend Market in Bangkok and Thais call it 'Talad Tairod', which means 'Car Boot Sale'

- 🕒 Saturday and Sunday, 16:00 - 21:00 hrs.
- 📍 Chao Fa West Road, Phuket Town

# Phuket Fresh Market



## Phuket Town Central Markets

Phuket Town Central Market in Phuket Town is opposite Thai Airways offices, in front of the local 'blue bus' station. The market is large but not so busy, probably because two-thirds of the shops didn't want to move inside the new market possibly because of the cost, and you will still find them somewhere across the road in a maze of small streets.

- 🕒 Daily from 5:00 hrs.
- 📍 Ranong Road, Phuket Town



## Kamala Village Fresh Market

Kamala Village Market is held on Wednesdays and Saturdays, right at a foothill that separates Kamala from Patong. It's a colourful and lively market that gives you a glimpse of daily life in southern Thailand and a chance to find local products. Kamala Village Market also hosts stalls selling accessories, clothing, and delicious ready-made snacks.

- 🕒 Wednesday and Saturday from 15:00 - 19:30 hrs.
- 📍 Opposite Big C Kamala

# Phuket Fresh Market



## Banzaan Fresh Market

Banzaan Fresh Market in Patong is set in a large, building that contains a wide variety of reasonably priced food products, clothes and restaurants. There is a Food Village on the upper floor, which houses Thai and Seafood Restaurants, a Food Court and a few Clothing Stalls. On the ground floor is a Food Market where fresh seafood, fish, meat, flowers, fruit, vegetables and spices are sold. Cooking ingredients you expect to find in typical local fresh markets can be found here but in a cleaner and more pleasant atmosphere. The outdoor car park turns into an outdoor street food stall area at night.

- 🕒 Daily, from 11:00 - 21:00 hrs.
- 📍 Opposite Jungceylon Mall, Patong



P A R E S A

For more information or make a reservation, please contact our Angel at extension 0

Email: [fo@paresaresorts.com](mailto:fo@paresaresorts.com)